

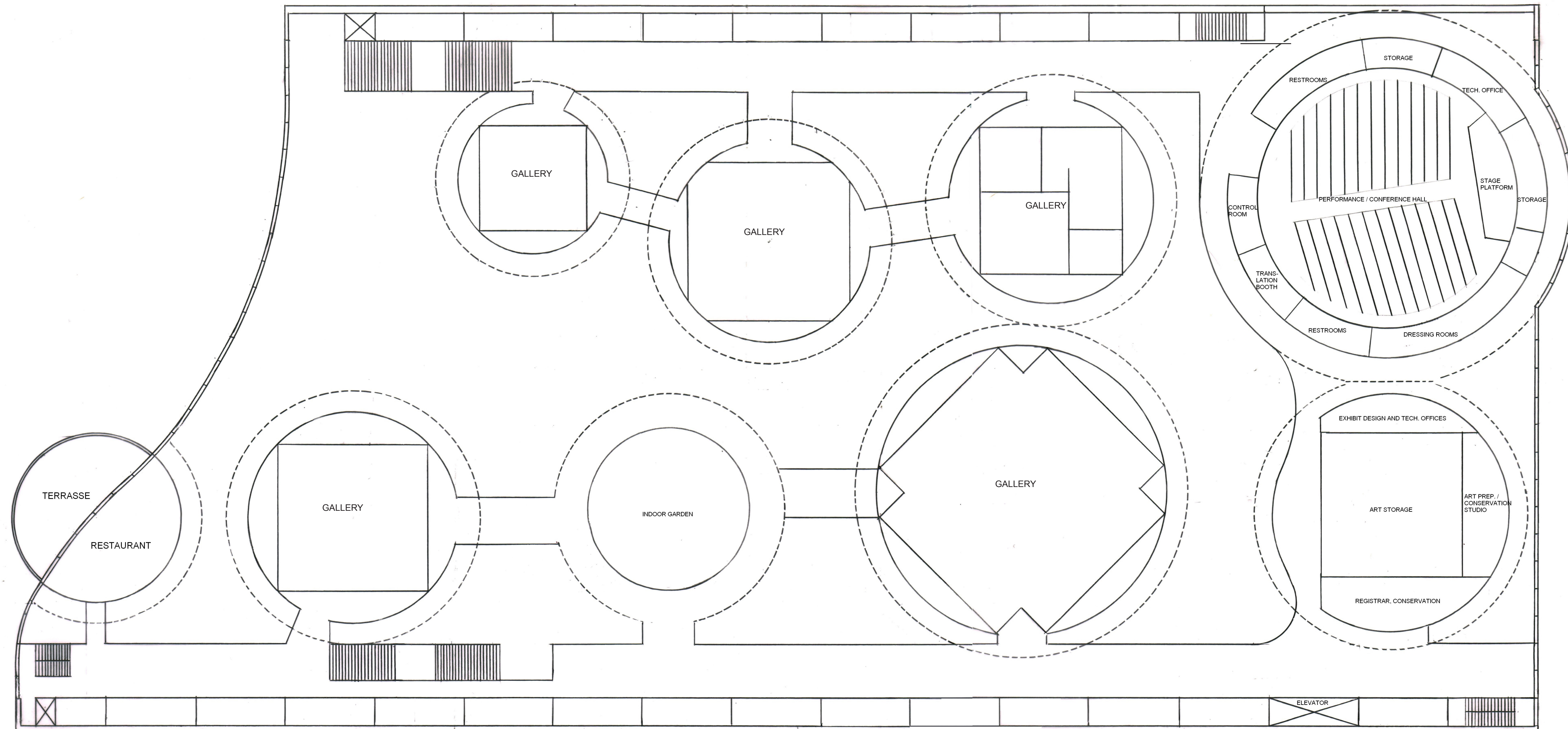
A NEW GUGGENHEIM MUSEUM IN HELSINKI



What is the most "Finnish" one can associate with? In this proposal one calls to mind the vast forests of birch trees and their trunks rising from the floor of the forest, the special light of the northern skies, the snow and ice and the renowned design of Finnish glassware.

The ground floor of the new museum symbolizes the trunks of trees as in a forest. The trunks support different slabs with frosted glass cylinders penetrating the roof thus drawing the day light, like light wells, deep into the middle of the museum. Inside these glass wells exhibition rooms are erected, clad with birch wood. The space between the outer glass well and the "wooden boxes" inside function as a semi transparent inner façade. At night the wells will be lit up by artificial light thus obtaining the same effect. Each box, enclosed by glass on the sides and also the roof of the well, has adjustable ceilings that allows different degrees of day light or total darkness.

The interpretation of the architecture is the forest with its translucence through the leaves. The new museum is kept low in height so as not to obstruct the view from the park. It is a very simple building seen from the outside with its wooden clad facades. The building is in no way a statement or a "loud" building and should not be an exterior showcase just to draw attention. The museum exhibition facilities and the way one is led from one part to another is fundamental and the architecture makes one want to explore the building and feel excited on one's way around. One enters the museum from a raised plaza to the north. One is met by the ticketing counter and cloak room to the left.



1. FLOOR PLAN - SCALE 1:200

One can choose to explore the first floor with access from a large staircase and on the first floor a series of smaller or larger exhibition rooms are found within the glass wells. Each box can be divided into smaller rooms depending on the current exhibit. One can close off the different boxes or make it into a continuous larger exhibit. The long walls on the inside of the facades also can be used for exhibits.

The large assembly hall is to be accessed from the first floor.

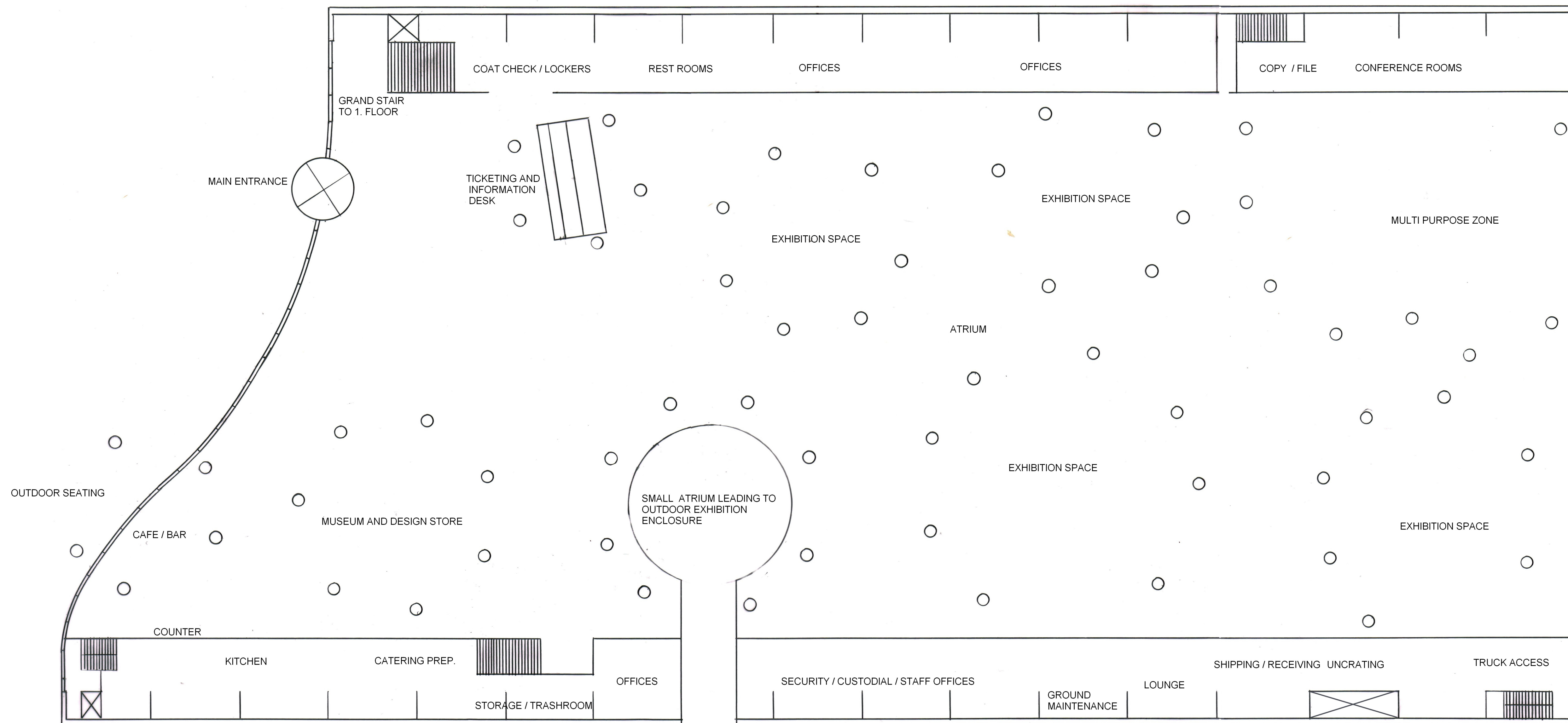
The ground floor will be a totally flexible exhibit space and can be closed off into smaller or larger areas by removable partition walls, according to the nature of the exhibit. One will find the large multi-purpose space beneath the large assembly hall. At the end of one's walkthrough, which will be different from exhibit to exhibit, one will find the store and finally the café, with an outdoor serving area facing the large access plaza. A formal restaurant can be reached either from the museum or at closing hours, from the plaza.

The museum expresses through its dramatic simplicity the quality of Finnish design using the three elements – wood, glass and light.

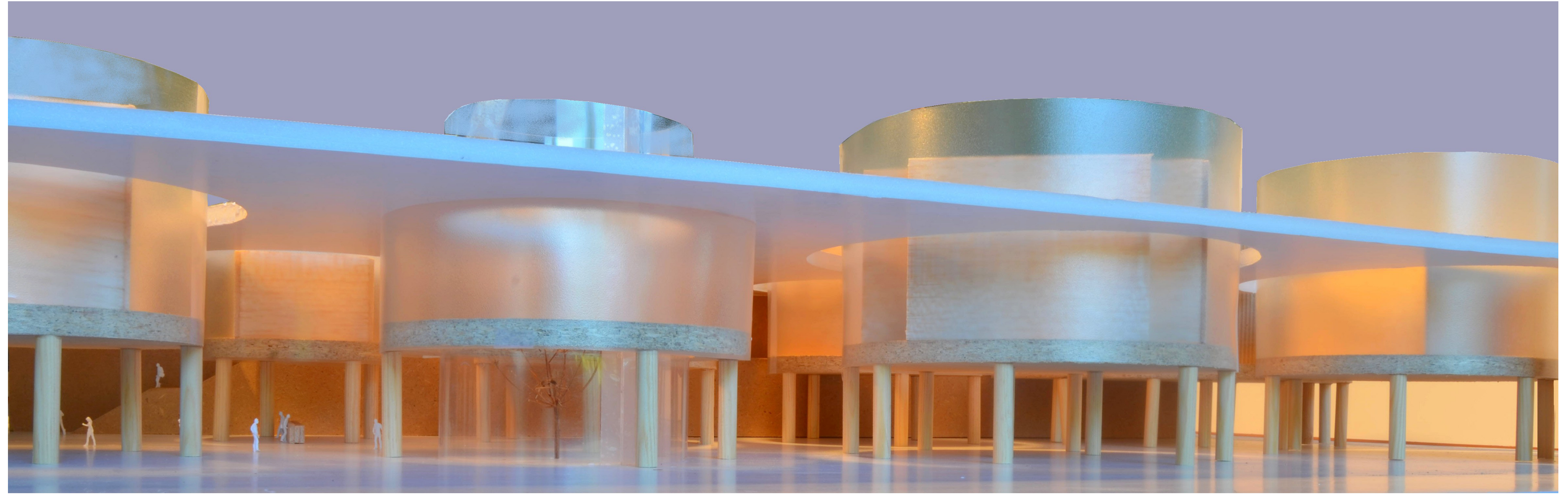
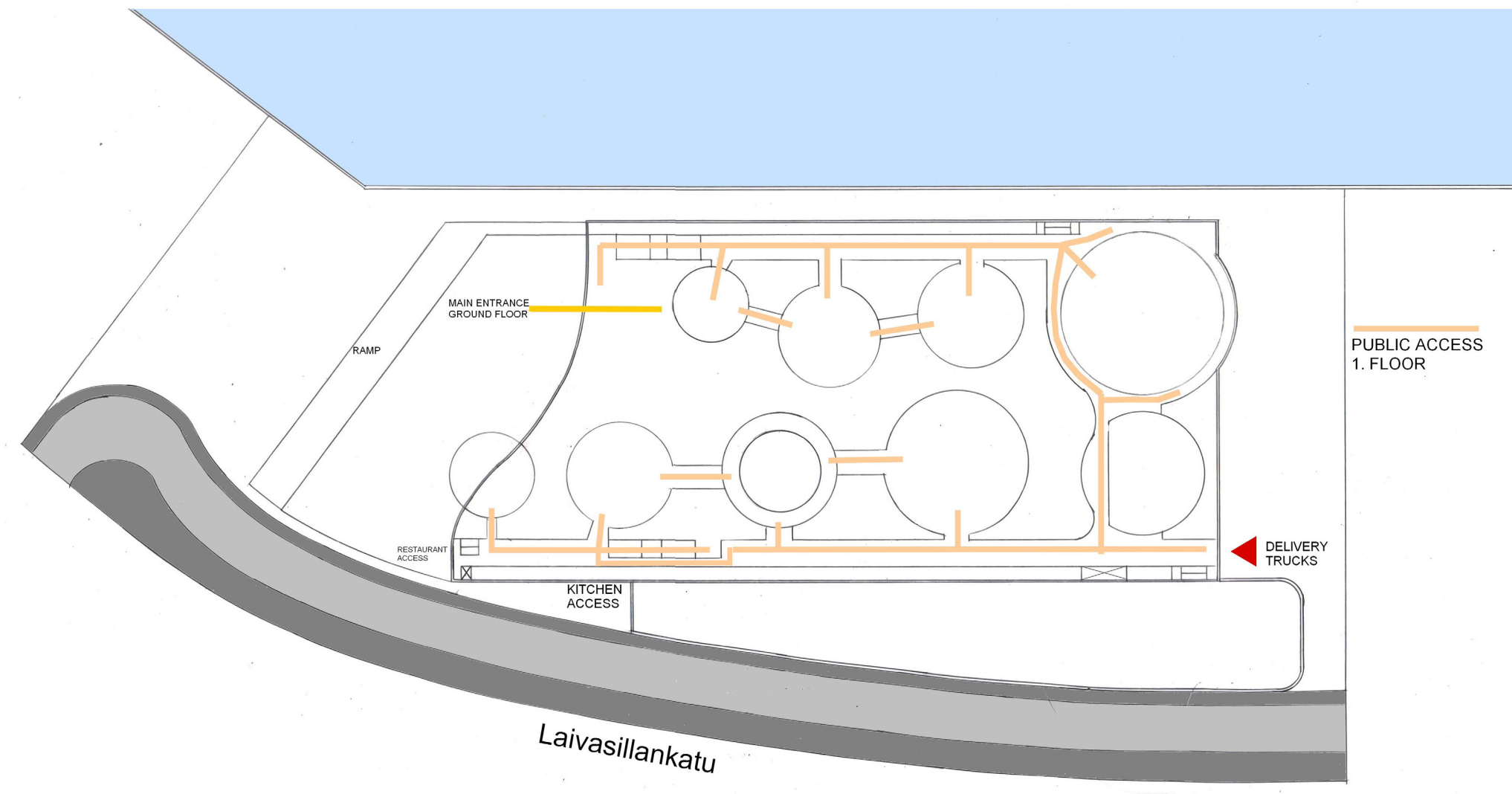
The space for exhibits is the foundation and it allows the presentation of the art in an uninterrupted flow of rich interior space, texture, light and form.

Large vehicles access from the south. Storage and offices are on the 1. floor – unpacking/ packing and crating on the ground floor. The 1. floor is served by a large elevator.

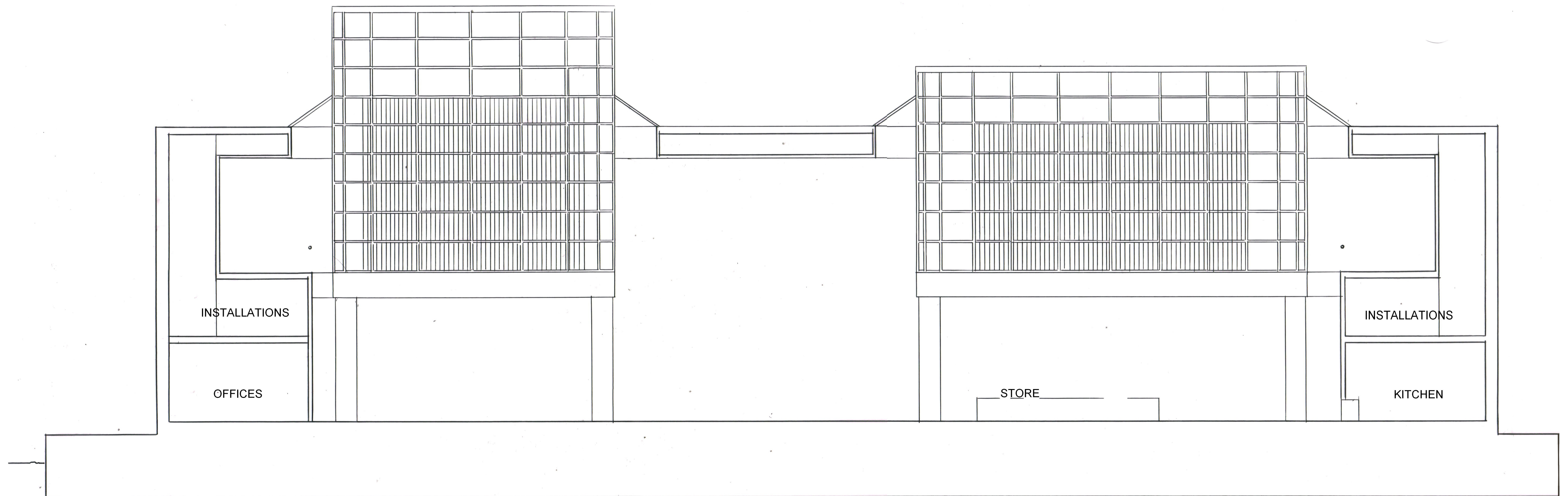
A glass inclosed " outdoor " area which serves as an integrated courtyard gives access to the outdoor sculpture garden facing west.



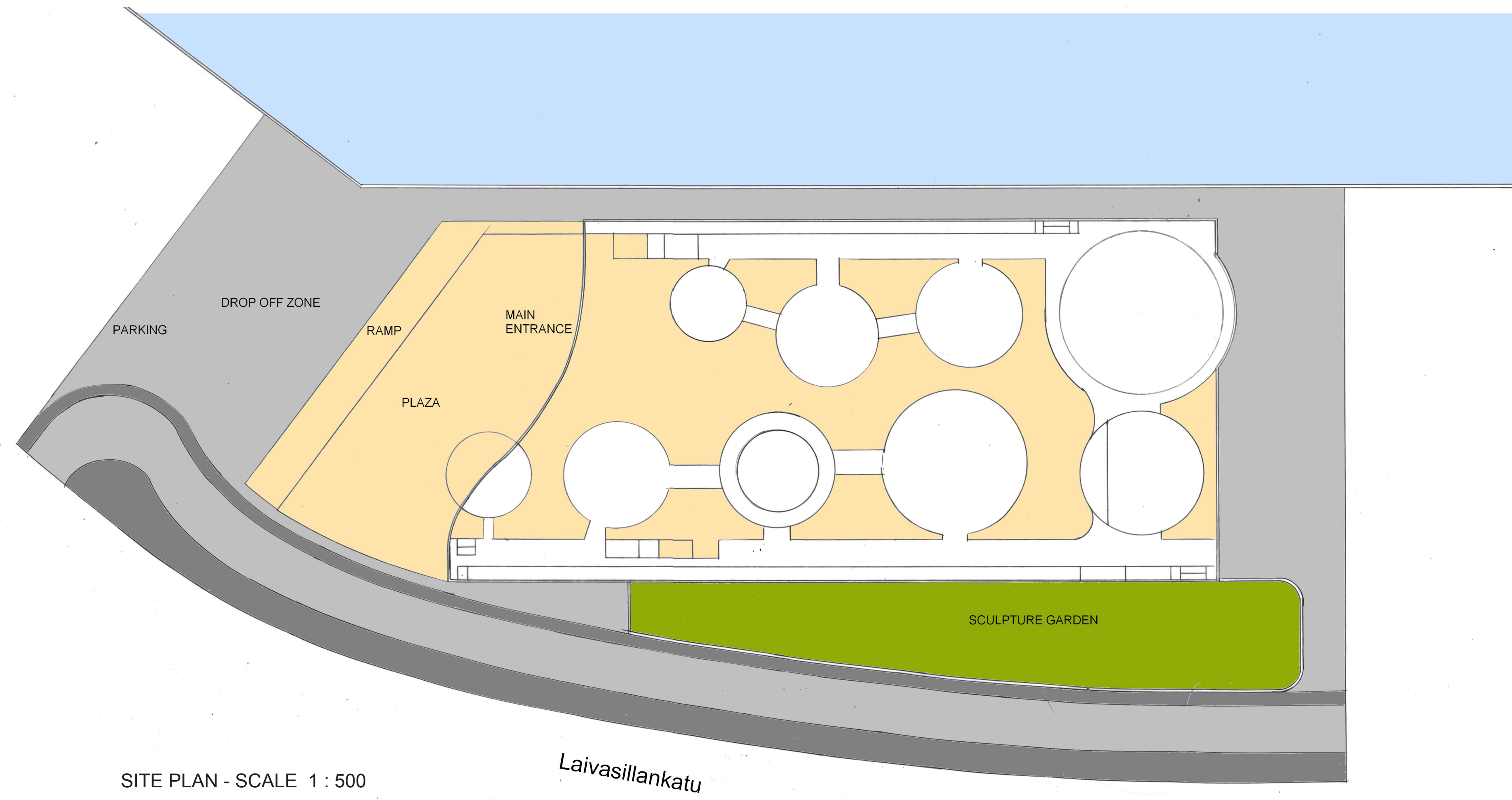
GROUND FLOOR - SCALE 1: 200



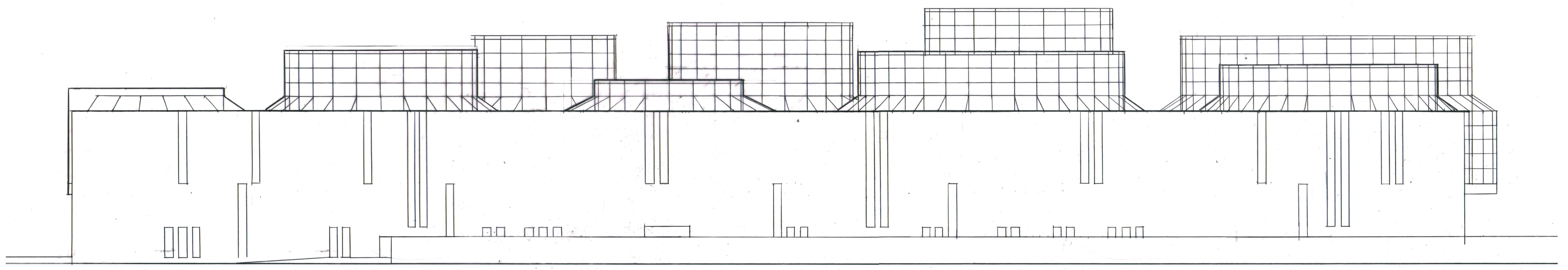
FACADE REMOVED - AT DUSK



SECTION - SCALE 1 : 100



SITE PLAN - SCALE 1 : 500



ELEVATION FACING WEST SCALE - 1 : 200